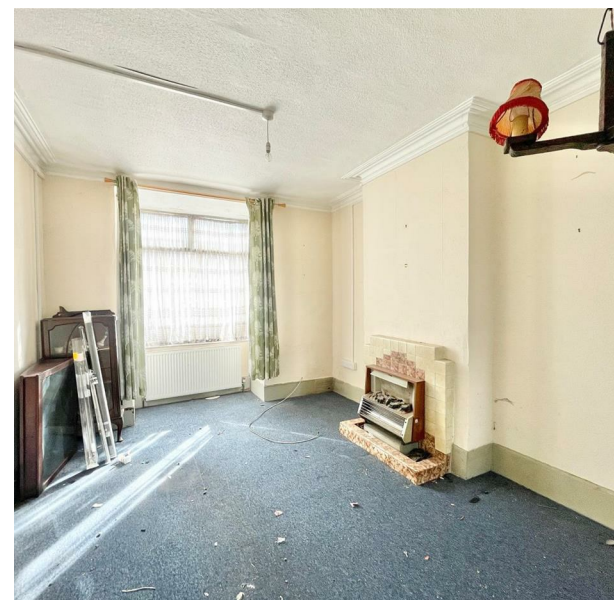


21 Gloucester Road, Walthamstow, E17 6AE
Price Guide £599,995

COMPLETION
SALES & LETTINGS



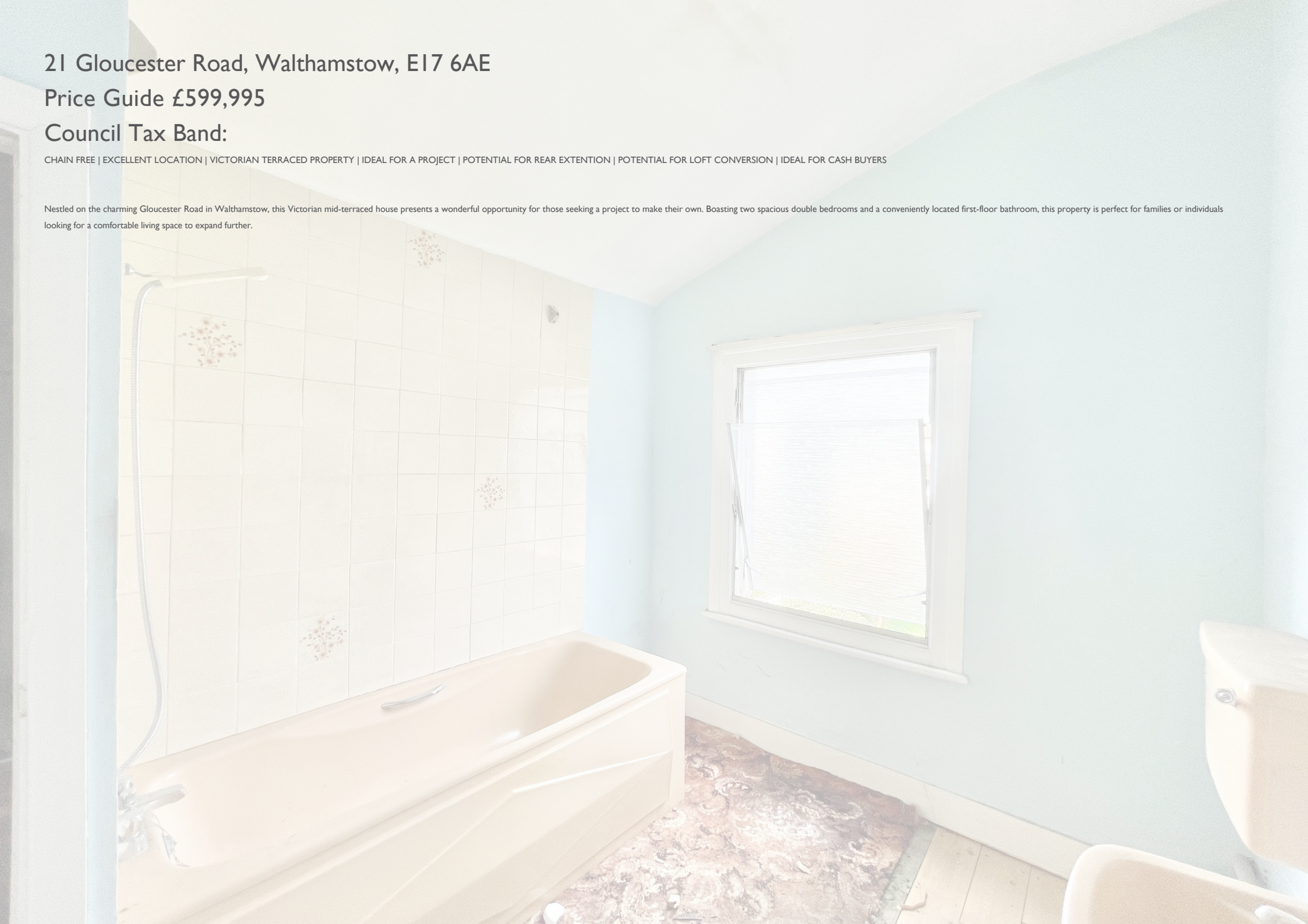
21 Gloucester Road, Walthamstow, E17 6AE

Price Guide £599,995

Council Tax Band:

CHAIN FREE | EXCELLENT LOCATION | VICTORIAN TERRACED PROPERTY | IDEAL FOR A PROJECT | POTENTIAL FOR REAR EXTENTION | POTENTIAL FOR LOFT CONVERSION | IDEAL FOR CASH BUYERS

Nestled on the charming Gloucester Road in Walthamstow, this Victorian mid-terraced house presents a wonderful opportunity for those seeking a project to make their own. Boasting two spacious double bedrooms and a conveniently located first-floor bathroom, this property is perfect for families or individuals looking for a comfortable living space to expand further.



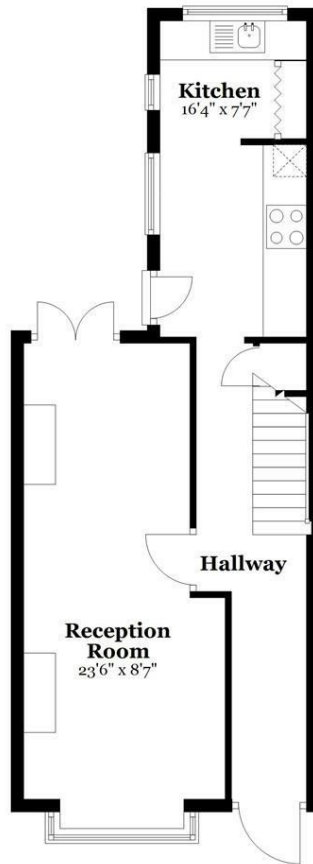






Ground Floor

Approx. 474.3 sq. feet



First Floor

Approx. 420.7 sq. feet



Total area: approx. 895.0 sq. feet

All measurements are appropriate and should not be relied upon.
Plan produced using PlanUp.

337 Forest Road

London

E17 5JR

02085277007

enquiries@completion.co.uk

completion.co.uk

Energy Efficiency Rating		
	Current	Potential
Very energy efficient - lower running costs		
(92 plus) A		
(81-91) B		
(69-80) C		
(55-68) D		
(39-54) E		
(21-38) F		
(1-20) G		
Not energy efficient - higher running costs		
England & Wales EU Directive 2002/91/EC		